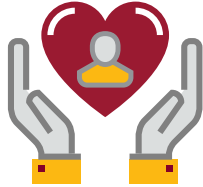


MIDWESTERN STATE UNIVERSITY CORE VALUES

PEOPLE-CENTERED

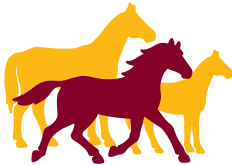
Engage others with respect, empathy, and joy



- > Honor and act upon the unique needs of all people
 - > Celebrate the accomplishments and contributions of every person in every role
 - > Empower others through personal attention to unlock ground-breaking potential
 - > Commit to attract, recruit, and retain a workforce reflective of our students
 - > Create a welcoming environment that fosters trust, teamwork, well-being, and fun
 - > Develop activities embracing meaningful traditions
-

COMMUNITY

Cultivate a welcoming and belonging campus environment



- > Promote a culture of welcome and belonging
 - > Nurture a safe and open environment for difficult conversations
 - > Welcome honest communication and constructive feedback
 - > Recognize, acknowledge, and dismantle barriers to success
 - > Provide meaningful and accessible support to the MSU community
-

INTEGRITY

Always do the right thing



- > Act honorably and respectfully in all situations
 - > Take responsibility for our words and actions
 - > Learn and grow from successes and failures
 - > Communicate and act with honesty, humility, and transparency
 - > Make courageous and ethical decisions
-

VISIONARY

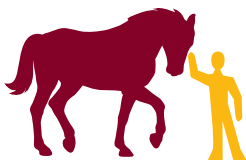
Adopt innovative ideas to pioneer new paths



- > Inspire and empower others through and beyond the educational experience
 - > Foster an environment of critical thinking, problem solving, and creativity
 - > Champion continuous institutional progress
 - > Collaborate to explore opportunities and overcome challenges
-

CONNECTIONS

Value relationships with broader communities



- > Forge pathways for experiential learning beyond the campus
- > Encourage open communication, service, and collaboration wherever we go
- > Create genuine bonds where each person feels recognized and valued
- > Collaborate to develop programs that benefit our communities
- > Share and celebrate the Mustangs can-do spirit